



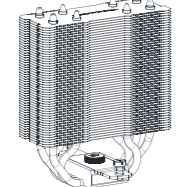
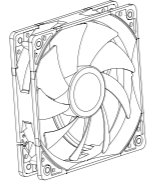
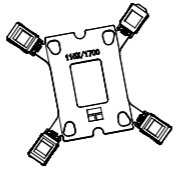
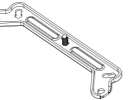
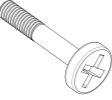
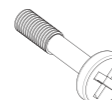
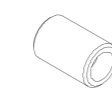


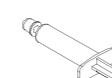

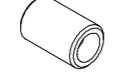
INSTALLATION GUIDE

Assassin X 120 REFINED SE Series

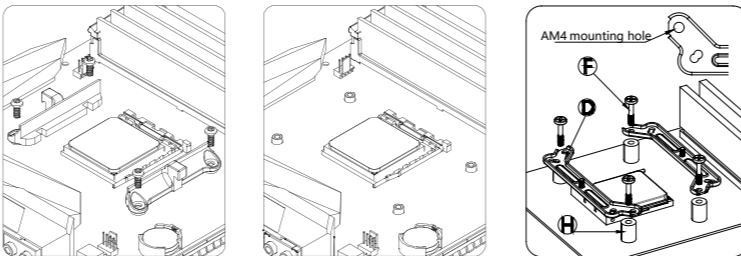
www.thermalright.com

V1.0

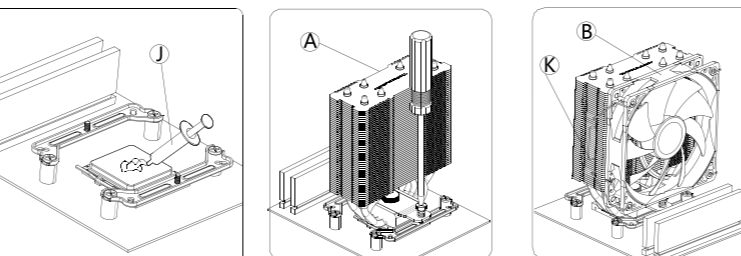
parts list

 A Heatsink x1	 B FAN x1 (PLUS x2)	 C LGA115x/1700 Back Plate *1	
 D INTEL/AM4 Bracket x2	 E Intel Screw x4	 F AM4 Screw x4	 G 115X / 1200 Standoff x4
 H AM4 Standoff x4	 I Wire x1 (use for plus)	 J Thermal Grease x1	 K FAN CLIP x2
 L 17XX Standoff x4			

AMD AM4

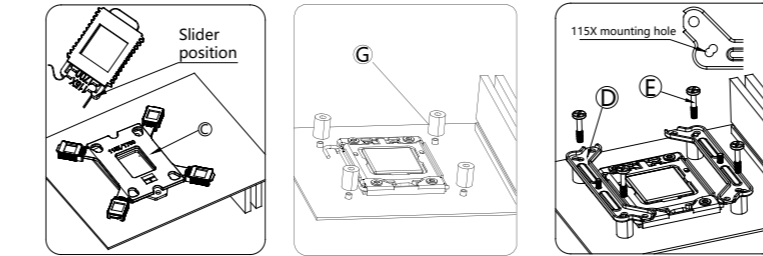


REMOVE AMD AM4 plastic brackets, KEEP the back plate, install AM4 metal brackets with AM4 screws and AM4 plastic standoffs

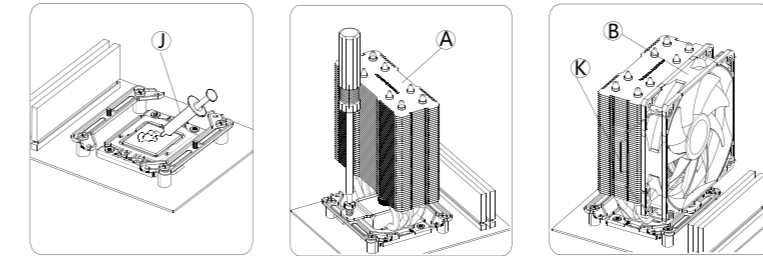


Apply thermal grease on CPU, install the heatsink with a screw driver, and install fans on heatsink with fan clips

INTEL LGA115X/1200

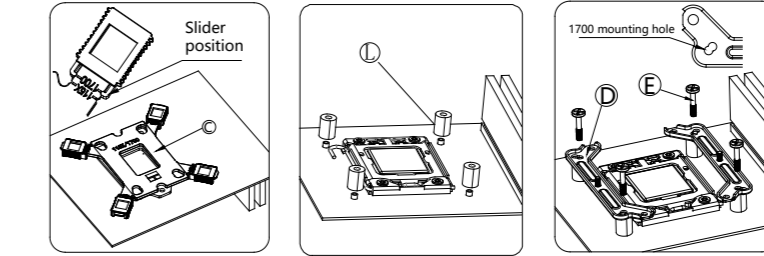


Install the LGA115X/1700 back plate from the back of motherboard, then place plastic standoffs from front side of motherboard, install LGA115X/1200 metal brackets with screws

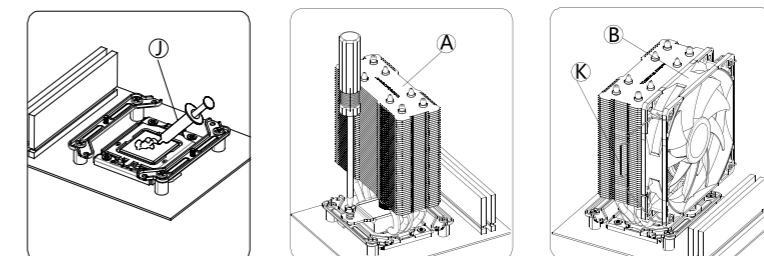


Apply thermal grease on CPU, install the heatsink with a screw driver, and install fans on heatsink with fan clips

INTEL LGA1700

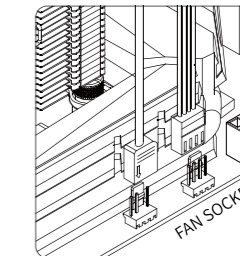


Install the LGA115X/1700 back plate from the back of motherboard, then place plastic standoffs from front side of motherboard, install LGA1700 metal brackets with screws

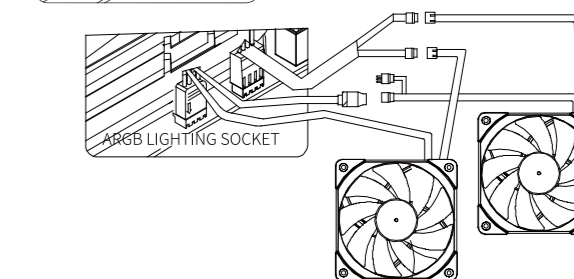


Apply thermal grease on CPU, install the heatsink with a screw driver, and install fans on heatsink with fan clips

Fan Wiring



Insert 4-pin PWM fan header in CPU_FAN socket on motherboard, use Y-cable to sync fan speed for dual fan setup.



For Fans with ARGB lighting, To control the ARGB lighting, connect ARGB lighting header (3-pin +5V) to motherboard ARGB lighting socket or ARGB lighting controller, lighting effects can be sync by connecting fan lighting headers with each other